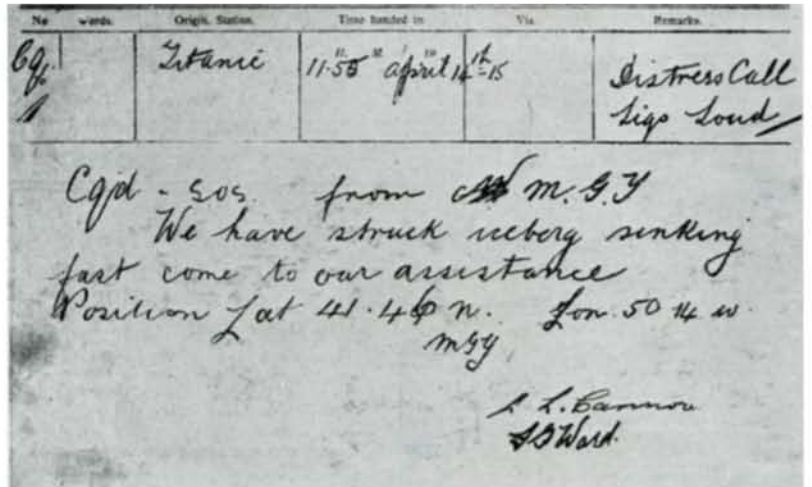


CQD Titanic 11:55 April 14th-15 Distress Call
Signal's Loud

CQD - SOS from M.G.Y

We have struck iceberg sinking
fast come to our assistance
Position Lat 41.46 N. Lon 50.14 W
MGY

L.L. Connor
Y.G. Ward



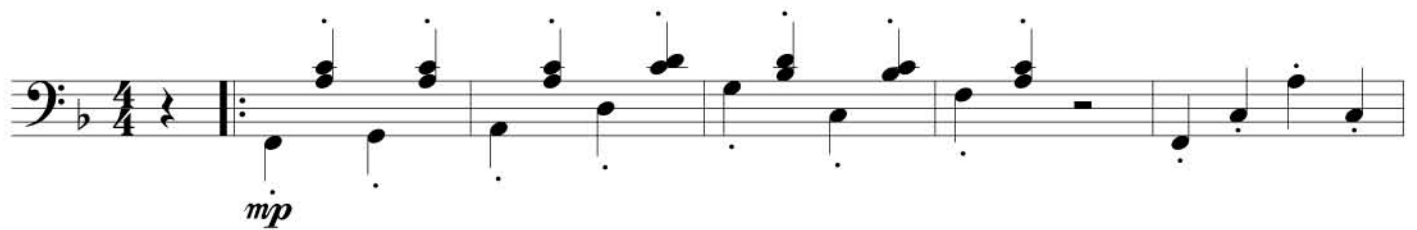
Wireless CQD Message from *Titanic* (MGY)

In the Shadows

Optional teacher duet. Student plays one octave higher.

Allegretto grazioso $\text{♩} = 69 - 76$

Arr. Rebekah Maxner



Purchase online at <http://www.notekidds.maxner.ca/titanicelementary.asp>

notekidds